

Selected  
References  
/

9–  
2016

Selected  
References  
/

9–  
2016

003    Referenze /  
         References

004    Esterni /  
         Exterior

170    Interni /  
         Interior

258    Design /

298    Dettagli tecnici /  
         Technical details



## Referenze

/Laminam è una superficie di alto livello tecnologico ed estetico che offre performance d'eccezione in tutti gli ambiti delle applicazioni solide: edilizia, arredamento e interior design. Grazie alle sue rivoluzionarie proprietà fisiche e meccaniche, Laminam trova impiego ideale come rivestimento esterno, applicata su sistemi di facciate ventilate e nella riqualificazione di edifici, con risultati di rilievo nel risparmio energetico. Per la perfetta planarità delle lastre e la facilità di lavorazione è un materiale dalle qualità architettoniche e creative uniche nell'arredamento d'interni e nel design. Vera e propria pelle, Laminam è utilizzabile come rivestimento di pareti e pavimenti in ambito sia residenziale sia pubblico, come superficie orizzontale personalizzata per top di cucina e mobili bagno, banchi di locali pubblici, tavoli da esterno, e come superficie verticale per porte e pareti divisorie.

## References

/Laminam is a high tech, beautiful surface offering an outstanding performance in all fields of solid applications: building, furniture and interior design. Its revolutionary physical and mechanical properties makes Laminam ideal as an exterior covering, applied to systems of ventilated facades and for the renovation of buildings, with significant results in terms of energy savings. The perfectly flat surface of the slabs and the ease of working makes it a material whose architectural and creative qualities are unique in the world of furniture and interior design. Laminam is like a real skin and can be used as a covering for walls and floors in both residential and public applications, as a customised horizontal surface for kitchen worktops and bathroom fittings, counter tops in public spaces, outdoor tables and as a vertical surface for doors and partition walls.

Ancona <sup>090</sup>  
 Anyang <sup>010</sup>  
 Auckland <sup>054/112</sup>  
 Barcelona <sup>034</sup>  
 Budapest <sup>148/158>161</sup>  
 Busan <sup>094</sup>  
 Christchurch <sup>058/084</sup>  
 Calgary <sup>114</sup>  
 Cuneo <sup>024</sup>  
 Fermo <sup>066</sup>  
 Gdynia <sup>076</sup>  
 Hangzhou <sup>050</sup>  
 Johannesburg <sup>040/100</sup>  
 Kuala Lumpur <sup>026</sup>  
 Kagoshima  
 Kolkata <sup>028</sup>  
 Kielce <sup>044</sup>  
 La Coruña <sup>032</sup>  
 La Spezia <sup>116</sup>  
 León Guanajuato <sup>036</sup>  
 Livorno <sup>102>107/136</sup>  
 Lucca <sup>126/134</sup>  
 Macerata <sup>156</sup>  
 Milan <sup>046/118</sup>  
 Modena <sup>144</sup>  
 Moscow <sup>092</sup>  
 Mumbai <sup>130</sup>  
 Nagoyama <sup>052</sup>  
 Nis <sup>150</sup>  
 Okayama <sup>070</sup>  
 Osaka <sup>080</sup>  
 Parma <sup>120</sup>  
 Pisa <sup>122</sup>  
 Pordenone <sup>098</sup>  
 Prague <sup>048</sup>  
 Ravenna <sup>108</sup>  
 Reggio Emilia <sup>012/138</sup>  
 Rio de Janeiro <sup>124</sup>  
 Tarusa <sup>062</sup>  
 Rovigo <sup>086</sup>  
 Santiago De  
 Querétaro <sup>038</sup>  
 Seoul <sup>008/096/140>143/152>155/162-169</sup>  
 Shanghai <sup>072</sup>  
 Sydney <sup>006</sup>  
 Taichung <sup>082</sup>  
 Tauranga <sup>042/056</sup>  
 Rimini <sup>016</sup>  
 Tarnowo Podgórze <sup>020</sup>  
 Terni <sup>088/146</sup>  
 Tokyo <sup>060/110</sup>  
 Torino <sup>014/022</sup>  
 Toronto <sup>064/074</sup>  
 Treviso <sup>030</sup>  
 Warsaw <sup>078</sup>  
 Wroclaw <sup>019</sup>  
 Yangjae-dong <sup>128</sup>  
 Vicenza <sup>132</sup>

# Esterni / Exterior chapter Aa—

**/Sydney**

Year: 2016  
Darling Harbour  
Live International  
Convention Centre  
Sydney /Australia  
Design: Hassel+Populous  
Laminam 5  
Ventilated Facades  
Oxide Bianco  
1000x3000  
← →



**/Seoul**

Year: 2016  
 Goduk Raemian Hill State  
 Seoul /South Korea  
 Design: Korea Formative  
 /Rhythm Architect &  
 Engineers (KFRT)  
 Laminam 5  
 Customized Series  
 Total quantities  
 involved: 95,000m<sup>2</sup>  
 Number of buildings: 51  
 ← →

**/Anyang**

Year: 2016  
Anyang Buddhism  
Cultural Center  
Anyang, Gyeonggi-do  
/South Korea  
Design: Haenglim  
Laminam 3+  
Filo Rame  
1000x3000  
← →





### /Reggio Emilia

Year: 2016  
 Sagtubi  
 Novellara /Reggio Emilia /Italy  
 Design: Ingrid Fontanili Architetto  
 Laminam 3+  
 Fokos, Terra  
 I Metalli, Plumbeo Ossidato  
 1000x3000  
 ← →





**/Torino**

Year: 2016  
Residential Building  
Torino /Italy  
Laminam 3  
I Naturali Pietre, Pietra di Savoia Grigia  
Various Sizes  
← →



**/Rimini**

Year: 2016  
Hera /Coriano /Rimini /Italy  
Design: Hera Spa  
Laminam 3+  
Ventilated Facades  
Blend Noce  
Various Sizes  
← →



### /Wroclaw

Year: 2015  
 Politechnika Wroclawska  
 Wroclaw /Poland  
 Design: MSc Eng  
 Arch Ewa Frankiewicz  
 Laminam 3+  
 Ventilated Facades  
 I Naturali Marmi  
 Crema Marfil  
 1000x3000  
 ← →



**/Tarnowo Podgórze**

Year: 2015  
Tarnowskie Termy  
Tarnowo Podgórze  
/Poland  
Laminam 5  
Ventilated Facades  
Oxide Bianco  
1000x3000  
← →



**/Torino**

Year: 2015  
Villa Augusta  
Bruino / Torino / Italy  
Design: Progettazione Integrale  
Ventilated Facades / Laminam 3+  
Collection Bianco  
Various Sizes  
← →



**/Cuneo**

Year: 2015  
 Gai S.p.A  
 Cuneo /Italy  
 Design: Studio Ing. Carlo Gai  
 Laminam 5, Laminam 3+  
 Fokos Rena  
 Various Sizes  
 ← →

**/Kuala Lumpur**

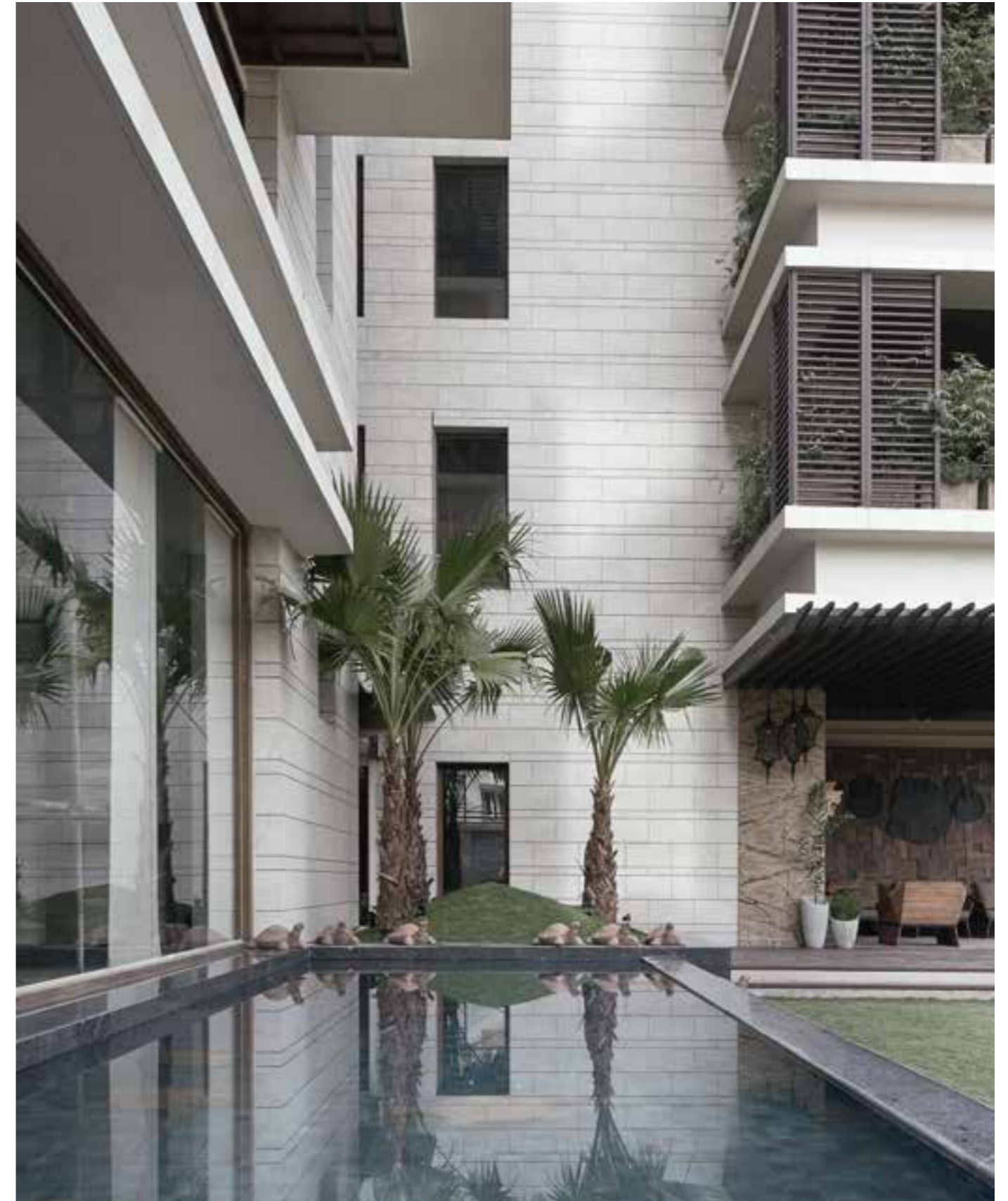
Year: 2015  
Gleneagles  
Medini Hospital  
Medini, Kuala Lumpur  
/Malaysia  
Design: B+H Architect  
Laminam 3+  
Ventilated Facades  
Collection Bianco  
1000x3000  
← →





/Kolkata

Year: 2015  
 Diwan House  
 Kolkata, West Bengal /India  
 Design: Agrawal & Agrawal  
 (Arch. J.P Agrawal)  
 Laminam 3+  
 Collection Avorio  
 Various Sizes  
 ← →





**/Treviso**

Year: 2015  
 Ascom  
 Treviso /Oderzo /Italy  
 Design: Archt. Edoardo Gherardi  
 Laminam 3+  
 Ventilated Facades  
 Fokos Sale  
 Various Sizes  
 ← →



**/La Coruña**

Year: 2015  
 House Complex  
 La Coruña /Spain  
 Design: Luis Rodriguez  
 Lopez Sors  
 Laminam 3+  
 Ventilated Facades  
 Collection Fumo, Perla  
 1000x3000

← →



**/Barcelona**

Year: 2015  
Ruvic Residencia  
Universitaria  
VIC Barcelona  
Vic /Barcelona /Spain  
Laminam 3+  
Filo Brina, Mercurio  
1000x3000  
← →



#### /León Guanajuato

Year: 2015  
Commercial Building  
Plaza Mayor  
León Guanajuato /Mexico  
Design: Sordo Madaleno Arquitectos  
(Arch. Humberto Mendoza)  
Laminam 3+  
Ventilated Facades  
Collection Bianco  
1000x3000  
← →



**/Santiago De Querétaro**

Year: 2015  
 Chamber of Deputies  
 Santiago De Querétaro /Mexico  
 Design: Archt. Augusto Álvarez  
 /Archt. Martín Gutiérrez +  
 Archt. Gerardo Gutiérrez  
 Laminam 5  
 Ventilated Facades  
 Collection Bianco, Grigio  
 1000x3000  
 ← →





**/Johannesburg**

Year: 2015  
 Sandton City  
 Johannesburg/  
 South Africa  
 Laminam 3+  
 Filo, Argento  
 Various sizes  
 ← →



**/Tauranga**

Year: 2015  
 Private Residence  
 Tauranga /New Zealand  
 Design: Creative Space  
 Laminam 3+  
 Ventilated Facades  
 Oxide Perla  
 Blend Grigio  
 Various Sizes  
 ← →



**/Kielce**

Year: 2015  
Aqua Office Building  
Kielce /Poland  
Laminam 3+  
Ventilated Facades  
Collection Nero  
1000x3000  
← →

**/Milan**

Year: 2015  
Office Building  
Milan /Italy  
Design:  
Studio Guidarini  
& Salvadeo  
Laminam 3+  
Ventilated Facades  
Oxide Perla  
Tredi Carbonio  
1000x3000  
← →

**/Prague**

Year: 2015  
Meteor Centre  
Office Park  
Prague /Czech Republic  
Design: Aukett s.r.o.  
Laminam 5  
Ventilated Facades  
Oxide Avorio, Nero  
Various Sizes  
← →



/Hangzhou

Year: 2015  
 Gree Shopping Center  
 Hangzhou /China  
 Ventilated Facades  
 Laminam 3+  
 Collection Bianco  
 1000x3000  
 ← →



**/Nagoyama**

Year: 2015  
 United Minicars  
 Nagoyama /Japan  
 Laminam 3+  
 Blend Nero  
 Various Sizes

← →



**/Auckland**

Year: 2015  
 Panmure Train Station  
 Auckland City/Panmure/  
 New Zealand  
 Ventilated Facades  
 Filo, Ghisa  
 1000x3000  
 ← →



**/Tauranga**

Year: 2014  
 Kathleen Kilgour Centre  
 Tauranga /New Zealand  
 Design: Wingate+Farquhar  
 Architects  
 Laminam 3+  
 Ventilated Facades  
 Collection Bianco,  
 Nero, Fumo  
 1000x3000  
 ← →



**/Christchurch**

Year: 2014  
Foley Building  
Christchurch  
New Zealand  
Design: Foley Group Architecture  
Laminam 3+, Laminam 7  
Ventilated Facades  
Filo Pece, Collection Bianco  
1000x3000

← →





**/Tokyo**

Year: 2015  
 OS Building  
 Tokyo /Japan  
 Laminam 3+  
 Oxide Moro  
 Various Sizes  
 ← →





### /Tarusa

Year: 2015  
 Private House  
 Tarusa, Kaluga Region  
 /Russia  
 Design: Arch-skin  
 Laminam 5  
 Indoor:  
 I Naturali Pietre  
 Pietra di Savoia Grigia  
 Collection Avorio  
 Fokos Rena, Terra  
 Outdoor:  
 I Naturali Marmi  
 Travertino Navona  
 1000X3000  
 333X3000  
 ← →



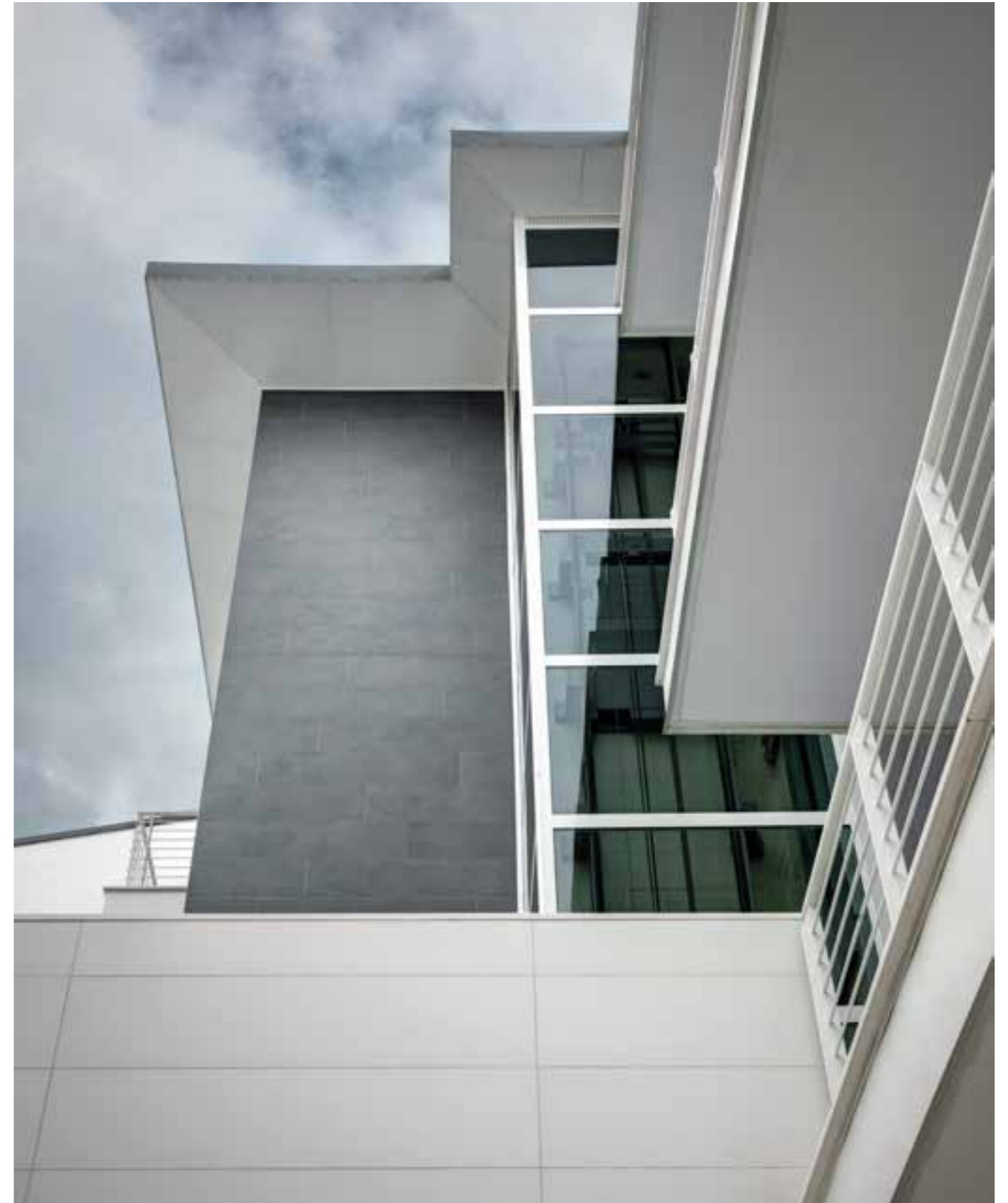


/Toronto

Year: 2015  
 365 Bloor St East  
 Toronto/Canada  
 Ventilated Facades  
 Collection, Neve  
 Various sizes  
 ← →

**/Fermo**

Year: 2015  
Private House  
Fermo/Porto Sant'Elpidio/Italy  
Ventilated Facades  
Blend, Grigio  
Collection, Bianco  
Various Sizes  
← →





**/Kagoshima**

Year: 2014  
 Hotel Gate In Kagoshima  
 Kagoshima /Japan  
 Laminam 3+  
 Oxide Nero  
 1000X3000  
 ← →



/Okayama

Year: 2014  
 Actus  
 Okayama /Japan  
 Laminam 3+  
 Oxide Bianco  
 1000X3000  
 ← →



**/Shanghai**

Year: 2014  
 UBPA Restaurant  
 Shanghai /China  
 Design: LAC (Landscape  
 Architect Design Office  
 of Garden Project)  
 Laminam 3+  
 Filo Rame, Oro  
 Various Sizes  
 ← →

**/Toronto**

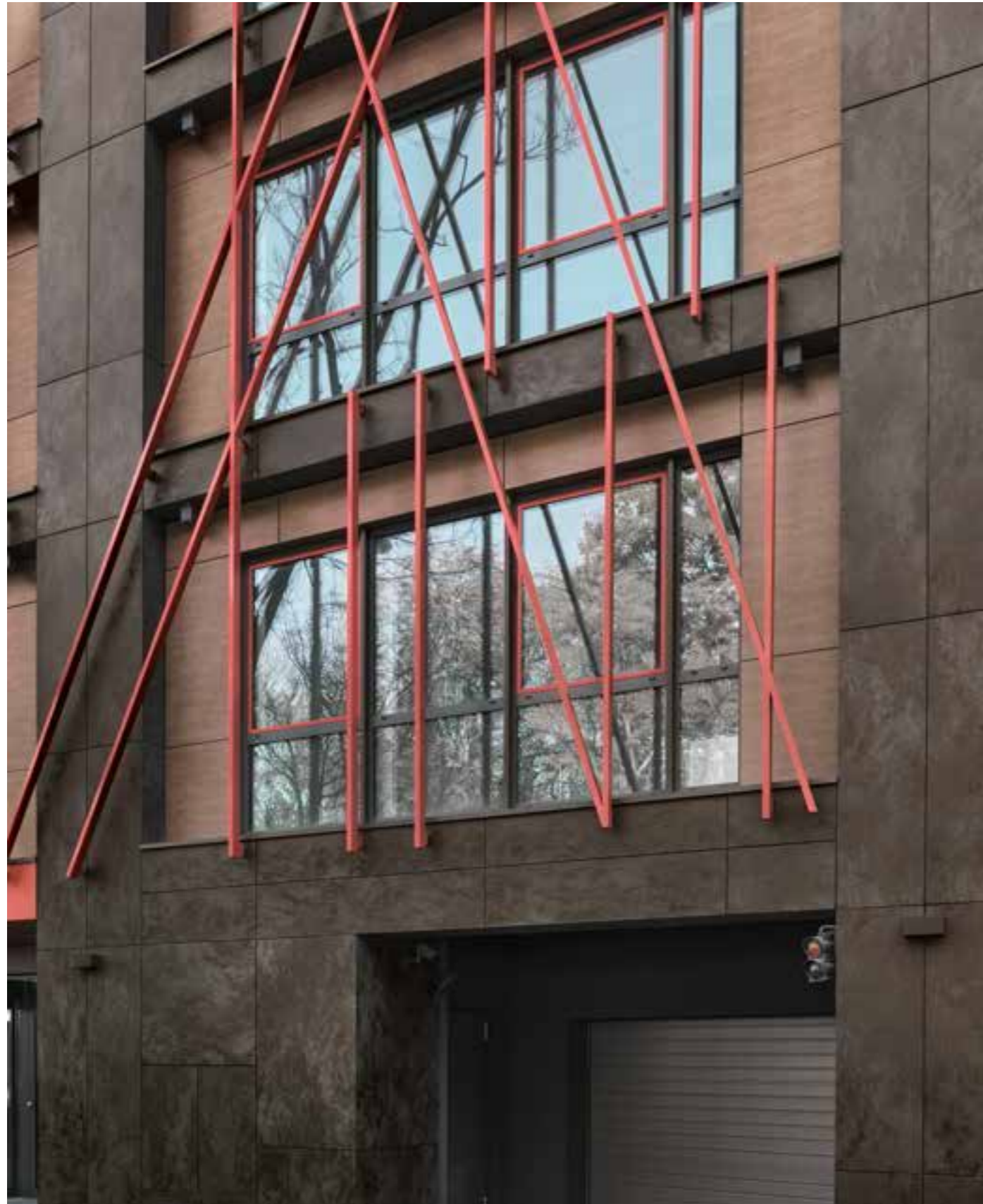
Year: 2014  
1 York Menkes  
Toronto /Canada  
Design: Sweeny&Co  
Architects  
Laminam 3+  
Ventilated Facades  
Oxide Nero  
1000x3000  
← →





**/Gdynia**

Year: 2014  
Silver House,  
Developer Invest Komfort  
Gdynia / Poland  
Design: Bjk Architekci  
Sp. z o.o.  
Laminam 3+  
Ventilated Facades  
Collection Neve  
1000X3000  
← →

**/Warsaw**

Year: 2014  
Portico Office Building  
Warsaw /Poland  
Laminam 3+  
Ventilated Facades  
Oxide Nero  
1000x3000  
← →



**/Osaka**

Year: 2014  
 Cassina lxc.  
 Osaka /Japan  
 Laminam 3+  
 Ventilated Facades  
 Fokos Piombo  
 1000x3000  
 ← →



**/Taichung**

Year: 2014  
 House Complex  
 Taichung/Taiwan  
 Laminam 3+  
 Oxide, Moro  
 Various Sizes  
 ← →



/Christchurch

Year: 2014  
 Creyke House  
 Christchurch /New Zealand  
 Design: Architects Plus  
 Laminam 3+  
 Oxide Moro  
 1000x3000  
 ← →



**/Rovigo**

Year: 2014  
La Cornice Contemporanea  
Rovigo/Castelmassa/Italy  
Designer:  
Dare-Architettura - Rudy Davi,  
Stefano Bizzarri  
Laminam 3+  
Metropolis, Bianco  
Various sizes  
← →





**/Terni**

Year: 2014  
 Private House  
 Terni/Italy  
 Laminam 3+  
 Collection, Fumo, Tortora  
 Various sizes  
 ← →



**/Ancona**

Year: 2014  
Offices  
Camerano/Ancona/Italy  
Laminam Esterna  
Collection, Fumo  
1000x3000  
← →



**/Moscow**

Year: 2014  
School in Mamontovka  
Moscow Region,  
Pushkino town ADM /Russia  
Laminam 5  
Ventilated Facades  
Kauri Beige  
333x3000

← →





**/Busan**

Year: 2014  
 Bay 101  
 Busan/South Korea  
 Design: Ilshin  
 Laminam 3+  
 Collection Bianco  
 1000x3000mm  
 ← →



**/Seoul**

YSR Hotel  
 Seoul /South Korea  
 Design: Ero  
 Laminam 3+  
 Ventilated Facades  
 Oxide Nero  
 Various Sizes  
 ← →

**/Pordenone**

Year: 2014  
Hyundai  
Pordenone/Italy  
Designer:  
Arch. Elena Niccoli - Trieste  
Ventilated Facades  
Oxide Moro  
Various sizes  
← →

**/Johannesburg**

Year: 2014  
Fluxmans Building  
Johannesburg /South Africa  
Design: Paragon Archietcts  
Laminam 3+  
Ventilated Facades  
Collection Bianco Lucidato  
1000x3000mm  
← →

**/Livorno**

Year: 2014  
Parco Levante - Coop  
Livorno /Italy  
Design: èthostudio s.r.l.  
Arch. Marco Brazzini  
Ing. Antonino Valenti  
Laminam 3+  
Oxide Bianco, Grigio, Perla  
Various Sizes  
← →

**/Livorno**

Year: 2014  
Decathlon  
Livorno/Italy  
Design: èthostudio s.r.l.  
Arch. Marco Brazzini  
Ing. Antonino Valenti  
Laminam 5  
Oxide, Bianco, Perla  
Various sizes  
← →

**/Livorno**

Year: 2014  
OBI  
Livorno/Italy  
Design: èthostudio s.r.l.  
Arch. Marco Brazzini  
Ing. Antonino Valenti  
Laminam 5  
Oxide, Bianco, Grigio  
Various sizes  
← →





/Ravenna

Year: 2014  
Hotel Perla Verde  
Ravenna/Milano Marittima /Italy  
Laminam 5  
Kauri, Grigio  
333x1500  
← →



/Tokyo

Year: 2014  
 MH Towers  
 Tokyo/Japan  
 Laminam 3+  
 I Naturali Pietre  
 Basalto Vena Scura  
 Oxide Grigio  
 1000x3000  
 ← →



**/Auckland**

Year: 2013  
McLaren Showroom  
Auckland /New Zealand  
Design: RTA Studio  
Laminam 3+, Laminam 7  
Collection Nero  
1000x3000  
← →



/Calgary

Year: 2013  
 Morguard Development  
 11th Avenue, Calgary  
 Alberta /Canada  
 Design: Sahuri & Partners  
 Laminam 3+  
 Ventilated Facades  
 I Naturali Pietre  
 Basalto Vena Scura  
 Ossidiana Vena Grigia  
 1000x3000  
 ← →





/La Spezia  
 Year: 2013  
 Office Building  
 La Spezia/Italy  
 Laminam 3+  
 Blend, Nero  
 Various sizes  
 ← →





**/Milan**

Year: 2013  
 Office Building  
 Milan/Italy  
 Laminam Esterna  
 I Naturali Pietre,  
 Basalto Vena Chiara  
 1000x3000  
 ← →





**/Parma**

Year: 2013  
Office Building  
Parma/Italy  
Laminam Esterna  
Oxide, Nero  
1000x3000  
← →



/Pisa

Year: 2013  
 Chateau d'Ax  
 Pisa/Perignano/Italy  
 Laminam Esterna  
 Collection, Nero  
 Various sizes  
 ← →



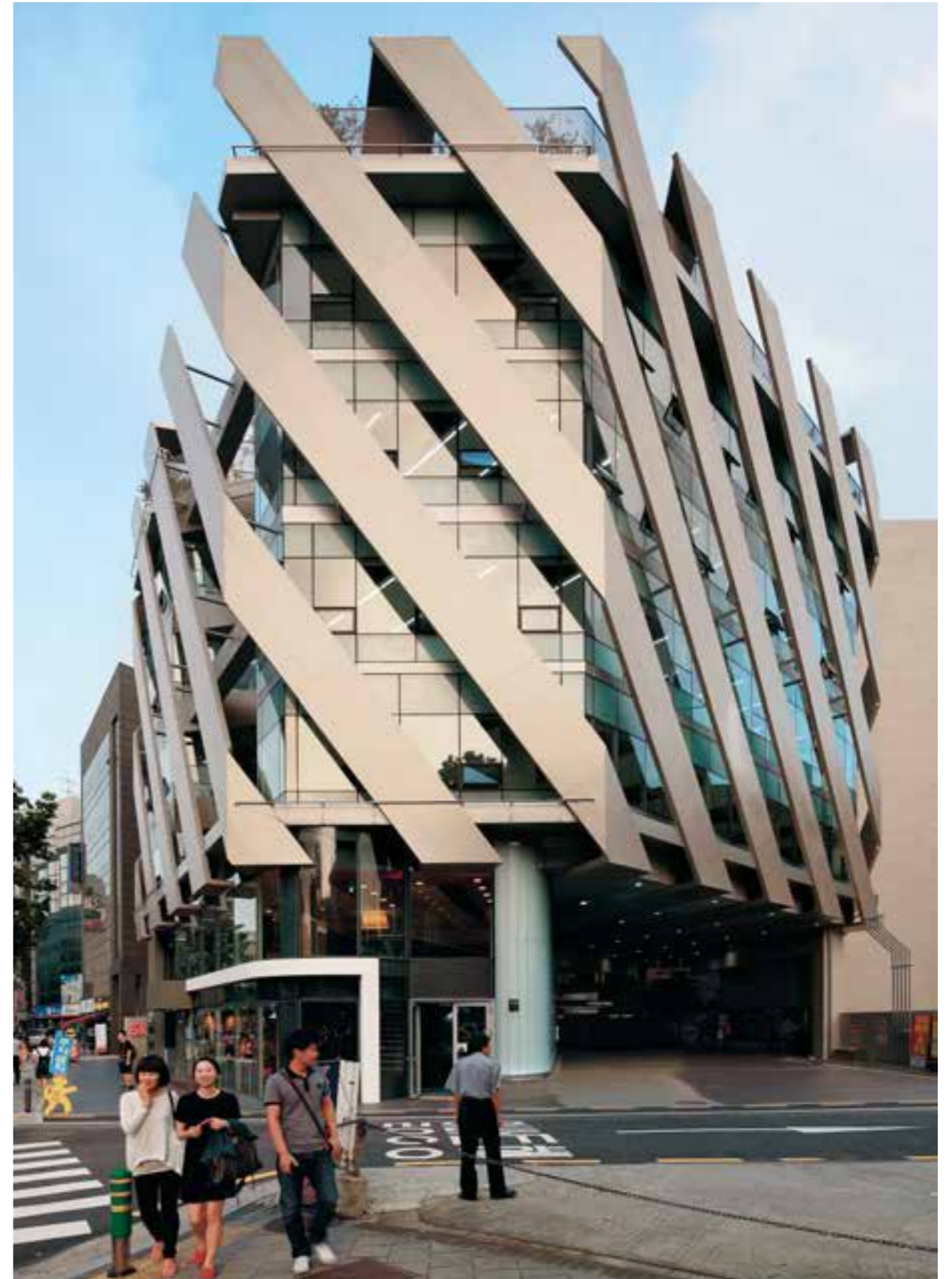


/Rio de Janeiro

Year: 2013  
Shopping Center  
Pão de Açúcar  
Rio de Janeiro/Brasil  
Laminam 3+  
Oxide, Moro  
1000x3000  
←

**/Lucca**

Year: 2013  
Shopping Center  
Lucca/Viareggio/Italy  
Laminam Esterna  
Oxide, Avorio, Moro  
1000x3000  
← →



**/Yangjae-dong**

Year: 2013  
 Office Building  
 Yangjae-dong/Korea  
 Laminam 3+  
 Filo, Argento  
 Various sizes  
 ← →



**/Mumbai**

Year: 2012  
 The Ruby  
 Mumbai /India  
 Design:  
 Access Architects  
 Laminam 3+  
 Oxide Moro  
 1000x3000  
 ← →



**/Vicenza**

Year: 2012  
 Office Building  
 Vicenza/Bassano del Grappa/Italy  
 Laminam Esterna  
 Collection, Moro, Fumo  
 1000x3000  
 ← →



**/Lucca**

Year: 2012  
Residence  
Lucca/Lido di Camaiore/Italy  
Laminam Esterna  
Oxide, Moro  
1000x3000  
← →



**/Livorno**

Year: 2012  
 Shopping Center  
 Livorno/Italy  
 Laminam Esterna  
 Oxide, Moro  
 Various sizes  
 ← →

**/Reggio Emilia**

Year: 2012  
Gamma Meccanica  
Reggio Emilia/Italy  
Laminam Esterna  
Blend, Nero  
Various sizes  
← →







**/Seoul**

Year: 2012  
Songdo BRC  
Seoul/South Korea  
Laminam 3+  
Linfa, Cortecchia  
Various sizes  
← →



**/Seoul**

Year: 2012  
 I-Tower  
 Seoul/South Korea  
 Laminam 3+  
 Collection, Fumo  
 Various sizes  
 ← →



**/Modena**

Year: 2011  
Private House  
Designer: Enrico lascone  
Modena/Italy  
Laminam 3+  
Collection  
Customized colour,  
1000x1000  
← →



**/Terni**

Year: 2011  
Residential Building  
Designer:  
Baldi Margheriti  
Associati  
Terni/Italy  
Laminam 3+  
Sketch, Moro  
Various sizes  
← →



**/Budapest**

Year: 2010  
 Office Building  
 Budapest/Hungary  
 Laminam 3+  
 Blend, Nero  
 1000X3000  
 ← →



## /Nis

Year: 2010  
Forum Shopping Center  
Designer:  
Gerardo Sannella,  
Chapman Taylor Architetti  
Nis/Serb Republic  
Laminam 3+  
Metropolis, Nero  
Collection, Nero  
1000x3000  
← →





**/Seoul**

Year: 2012  
 Commercial Building  
 Shinsa-dong /Seoul  
 /South Korea  
 Design: B&A  
 Laminam 3+  
 Collection Moro  
 1000x3000  
 ← →



**/Seoul**

Year: 2010  
 Commercial Building  
 Seoul/South Korea  
 Laminam 3+  
 Collection, Moro, Neve,  
 Corallo, Arancio, Notte  
 Various sizes  
 ← →





**/Macerata**

Year: 2010  
 Multiplex Cinema  
 Designer:  
 Ubaldo Severini Architetto  
 Macerata/Tolentino/Italy  
 Laminam Esterna  
 Blend, Nero  
 1000x3000  
 ← →

**/Budapest**

Year: 2009  
Residence Kacsá Ganz  
Designer:  
Platinum Group Kft  
Budapest/Hungary  
Laminam 3+  
Metropolis, Nero, Neve  
1000x3000  
← →



**/Budapest**

Year: 2009  
 Residence Kacsá Ganz  
 Designer:  
 Platinum Group Kft  
 Budapest/Hungary  
 Laminam 3+  
 Sketch, Moro, Tortora  
 Various sizes  
 ← →



/Seoul

Year: 2009  
 Commercial Building  
 Seoul/South Korea  
 Laminam 3+  
 Collection Neve, Fumo, Perla  
 Various sizes  
 ← →



**/Seoul**

Year: 2009  
 F&F Commercial  
 Building  
 Seoul/South Korea  
 Laminam 3+  
 Collection, Nero, Notte  
 Various sizes  
 ← →



**/Seoul**

Year: 2009  
 Pan Pacific  
 Commercial Building  
 Seoul/South Korea  
 Laminam 3+  
 Collection, Nero  
 Various sizes  
 ← →



**/Seoul**

Year: 2009  
 Hotel Plaza  
 Seoul/South Korea  
 Laminam 3+  
 Oxide, Moro  
 Various sizes  
 ← →

Amsterdam <sup>192</sup>  
Ancona <sup>216</sup>  
Como <sup>234</sup>  
Cuneo <sup>188</sup>  
Linz <sup>176</sup>  
London <sup>208>211/230</sup>  
Milan <sup>194>199/236>239/256</sup>  
Modena <sup>200>207/232/252/240>243</sup>  
Moscow <sup>174/178>181</sup>  
Osaka <sup>220</sup>  
Paris <sup>218</sup>  
Parma <sup>244</sup>  
Perugia <sup>222</sup>  
Prague <sup>190</sup>  
Ravenna <sup>224</sup>  
Reggio Emilia <sup>172/226</sup>  
Rio de Janeiro <sup>246</sup>  
Rome <sup>254</sup>  
Shanghai <sup>250</sup>  
Singapore <sup>184</sup>  
Sydney <sup>182</sup>  
Tokyo <sup>186/228</sup>  
Toronto <sup>214</sup>  
Venice <sup>248</sup>

# Interni / Interior chapter Bb—





**/Reggio Emilia**

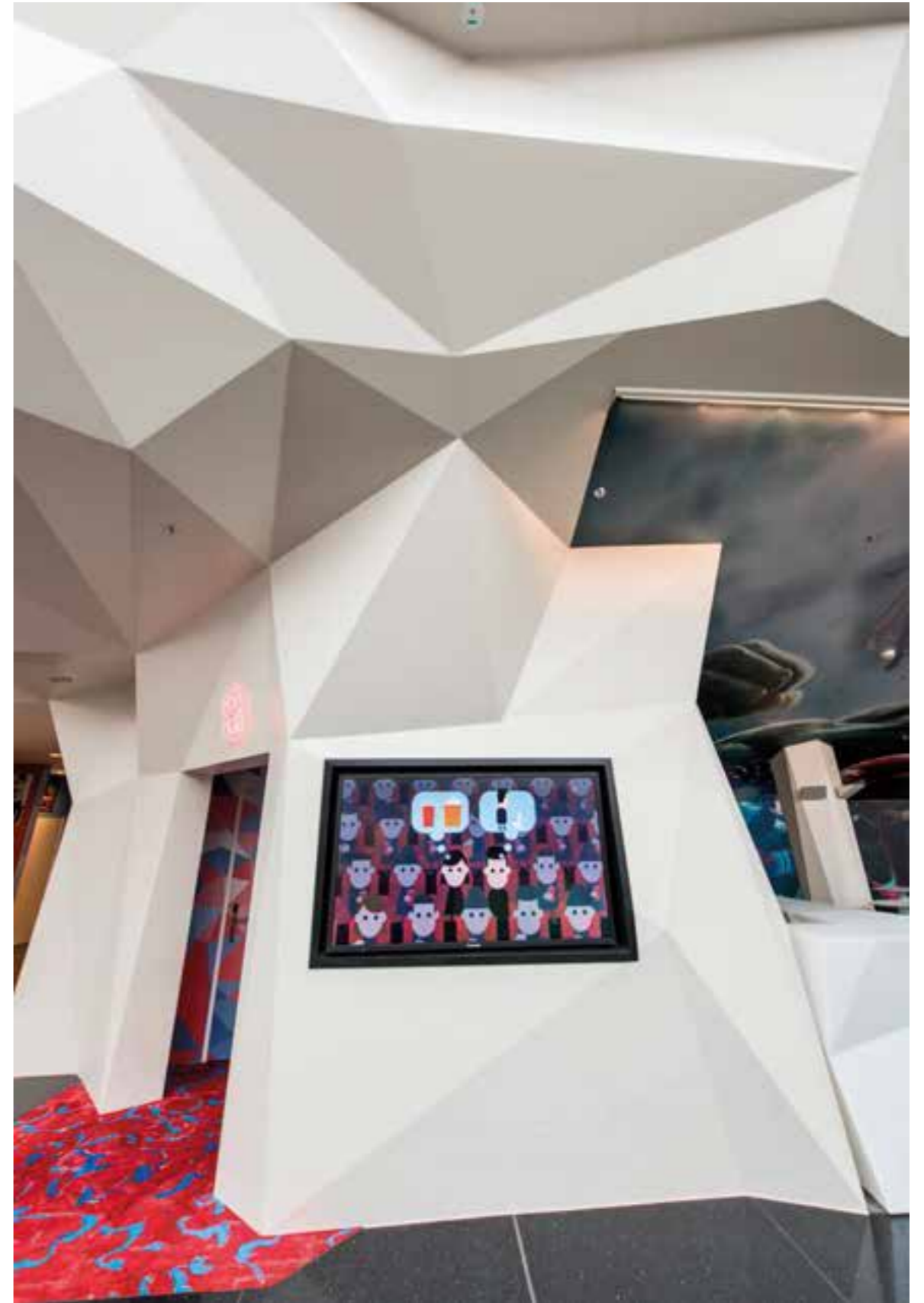
Year: 2016  
 Sagtubi  
 Novellara /Reggio Emilia /Italy  
 Design: Ingrid Fontanili Architetto  
 Laminam 3+  
 Kotan, Grey  
 1000x3000  
 ← →





**/Moscow**

Year: 2016  
 Museum Of Architecture /Nrdn  
 Moscow Museum  
 Moscow /Russia  
 Laminam 5  
 Oxide Moro  
 1000x3000  
 ← →



## /Linz

Year: 2016  
 Plus City  
 Leonding /Linz /Germany  
 Design: MAD Architekten  
 Laminam 3+  
 Collection Neve  
 Various Sizes  
 ← →



#### /Moscow

Year: 2015  
 The Country's Central Synagogue  
 Moscow /Russia  
 Laminam 5  
 I Naturali: Ossidiana Vena Chiara,  
 Travertino Romano Lucidato, Marfil Lucidato,  
 Fokos Rena, Kauri Beige  
 1000X3000 + Various Sizes

← →



### /Moscow

Year: 2015  
 Sreda House /Moscow /Russia  
 Design: UNK project  
 Laminam 5  
 I Naturali Pietre  
 Pietra Di Savoia Grigia  
 1000x3000  
 ← →



### /Sydney

Year: 2015  
 Sydney University  
 Sydney /Australia  
 Design: Woods Bagot Sydney  
 Laminam 3+, Laminam 5  
 I Naturali Pietre  
 Pietra di Savoia Grigia  
 Collection Perla,  
 Perla Lucidato, Fumo,  
 Tredi Basalto  
 1000x3000  
 ← →



### /Singapore

Year: 2015  
 South Beach Hotel  
 Singapore / Republic  
 of Singapore  
 Design: Foster+Partners, Philippe Starck  
 Laminam 3+  
 Oxide Grigio  
 Various Sizes  
 ← →



## /Tokyo

Year: 2015  
Takaosanguchi Station  
Tokio /Japan  
Design: Kengo Kuma  
and Associates +  
Keio Construction  
Laminam 3+  
Oxide Moro  
1000x3000

← →



**/Cuneo**

Year: 2015  
Gai S.p.A  
Cuneo /Italy  
Design: Studio Ing. Carlo Gai  
Laminam 5, Laminam 3+  
Fokos Rena  
Various Sizes  
← →



**/Prague**

Year: 2015  
 Metro Prague Anděl  
 Prague /Czech Republic  
 Laminam 3+  
 Collection Bianco, Fumo, Nero, Arancio  
 Various Sizes  
 ← →

**/Amsterdam**

Year: 2015  
Radisson Blue Hotel Amsterdam  
Amsterdam /The Netherlands  
Laminam 5  
Collection Neve, Crusca, Perla, Avorio  
(cut in unique special shape)  
← →



**/Milan**

Year: 2015  
 Expo 2015, Poland Pavilion  
 Milan/Italy  
 WXCA - Pracownia Architektoniczna  
 Collection, Nero Intenso  
 1000x3000  
 ← →



### /Milan

Year: 2015  
 Showroom Milano  
 Milan/Italy  
 Design Exchange  
 Designer:  
 Alessandra Stefani  
 Laminam 5  
 Kotan, Grey, Beige  
 Kanka, Brown, Black  
 Various sizes  
 ← →



#### /Milan

Year: 2015  
 Stand Flexform @ Salone del Mobile 2015  
 Milan/Italy  
 Laminam 5  
 I Naturali Marmi, Travertino Romano  
 1000x3000  
 ← →



**/Modena**

Year: 2015  
 Prinster - Della Fontana & Partners  
 Modena/Italy  
 Laminam 3+  
 I Metalli, Plumbeo Ossidato  
 I Naturali Pietre, Pietra di Savoia Antracite  
 1000x3000

← →



**/Modena**

Year: 2015  
Magazzini San Pietro  
Modena/Formigine/Italy  
Laminam 3+  
I Metalli, Plumbeo Ossidato  
1000x3000  
← →



**/Modena**

Year: 2015  
Magazzini San Pietro  
Modena/Formigine/Italy  
Laminam 3+  
I Metalli,  
Madreperla Ossidato  
1000x3000  
← →

**/Modena**

Year: 2015  
Barbieri Abbigliamento  
Modena/Formigine/Italy  
Laminam 5  
Fokos, Piombo  
1000x3000  
← →



## /London

Year: 2015  
 Private House  
 London/UK  
 Designer:  
 Daniele Petteno Architecture Workshop  
 I Naturali Pietre, Basalto Vena Chiara  
 Laminam 5  
 Various sizes  
 ← →

**/London**

Year: 2015  
Private House  
London/UK  
Designer:  
Daniele Petteno Architecture Workshop  
I Naturali Marmi, Travertino Avorio  
Blend, Nero  
Laminam 3+  
Various sizes  
← →



## /Milan

Year: 2015  
 Showroom Milano  
 Milan/Italy  
 Filo Ghisa, Rame  
 I Metalli Plumbeo Ossidato  
 Various sizes  
 ← →



**/Toronto**

Year: 2015  
 BridgePoint Hospital  
 Toronto/Canada  
 Laminam 3+  
 Collection Bianco  
 1000x3000  
 ← →

**/Ancona**

Year: 2014  
Ariston Thermo S.p.A  
Ancona/Fabriano/Italy  
Laminam 5  
I Naturali Marmi, Travertino Romano  
1000x3000  
← →

**/Paris**

Year: 2014  
Cafe Pouchkine /Paris /France  
Design: Agence Tetris  
Laminam 3+ /Collection Nero, Blend Nero  
1000X3000  
← →





**/Osaka**

Year: 2014  
 Panasonic Center Osaka  
 Osaka /Japan  
 Laminam 3+  
 Filo Mercurio  
 1000x3000  
 ← →



**/Perugia**

Year: 2014  
 Hotel Le Colombari  
 Perugia/Foligno/Italy  
 Laminam 5  
 Blend, Grigio  
 1000x3000  
 ← →

**/Ravenna**

Year: 2014  
Hotel Perla Verde  
Ravenna/Milano Marittima/Italy  
Laminam 5  
Fokos Terra, Kauri Moro  
1000x3000/333X1500  
← →



**/Reggio Emilia**

Year: 2014  
Private House  
Reggio Emilia/Rubiera/Italy  
Laminam 5  
Fokos Rena  
1000x3000  
← →



**/Tokyo**

Year: 2014  
 Asahi Kasei Homes  
 Tokyo/Japan  
 Laminam 5  
 I Naturali, Ossidiana Vena Chiara  
 1000x3000  
 ← →



**/London**

Year: 2013  
Morgan Lovell Office  
London/England  
Laminam 5  
I Naturali Pietre,  
Pietra di Savoia Grigia  
1000x3000  
← →



**/Modena**

Year: 2013  
 Laminam Expo  
 Modena/Fiorano Modenese/Italy  
 Collection, Nero Intenso, Grigio  
 1000x3000  
 ← →



**/Como**  
 Year: 2013  
 Private Hospital Le Betulle  
 Como/Italy  
 Laminam 3+  
 Oxide, Nero  
 Various sizes  
 ← →





**/Milan**

Year: 2013  
 Showroom Milano  
 Milan/Italy  
 Laminam 3+  
 I Naturali, Travertino Romano  
 Lucidato, Pietra di Savoia Grigia  
 Opificio Mediceo, Pietra Paesina  
 Various sizes  
 ← →



**/Milan**

Year: 2013  
Stand Hoc-Project  
Milan/Italy  
Laminam 5  
Fokos, Rena  
1000x3000  
← →



**/Modena**

Year: 2013  
Private House  
Modena/Italy  
Laminam 3+  
Filo, Mercurio  
1000x3000  
← →





**/Modena**

Year: 2013  
 Private House  
 Modena/Italy  
 Laminam 3+  
 Filo, Rame  
 1000x3000  
 ← →



**/Parma**

Year: 2013  
 Office Building  
 Parma/Italy  
 Laminam 3+  
 Filo, Rubino  
 Collection, Moro  
 1000x3000  
 ← →



**/Rio de Janeiro**

Year: 2013  
 Shopping Center  
 Pão de Açúcar  
 Rio de Janeiro/Brasil  
 Laminam 3+  
 Oxide, Moro  
 Various sizes  
 ← →

**/Venice**

Year: 2013  
Algiubagiò Restaurant  
Venice/Italy  
Laminam 3+  
Oxide, Moro  
Various sizes  
← →





**/Shanghai**

Year: 2012  
 Power Station of Art  
 Shanghai/China  
 Laminam 3+  
 Oxide, Nero  
 1000x3000  
 ← →





**/Modena**

Year: 2011  
 Private House  
 Designer:  
 Enrico lascone  
 Modena/Italy  
 Laminam 3+  
 Tredi, Basalto  
 1000x3000  
 ← →



**/Rome**

Year: 2011  
 Berg Luxury Hotel  
 Designer:  
 Carmen Etzi  
 Rome/Italy  
 Laminam 3+  
 Oxide, Moro  
 1000x3000  
 ← →



**/Milan**

Year: 2009  
Architectural  
Practice  
Designer:  
Studio Casiraghi  
Milan/Italy  
Laminam 3+  
Oxide, Moro  
1000x3000  
←

Alno <sup>284</sup>  
Calligaris <sup>264>267</sup>  
Dexo <sup>270</sup>  
Estel <sup>260</sup>  
Foscarini <sup>294</sup>  
by Laminam <sup>276/288</sup>  
Lualdi <sup>286</sup>  
Luca Piccinno <sup>262</sup>  
Ozzio Design <sup>268</sup>  
Royal Botania <sup>274</sup>  
Sekisui House Ltd <sup>280>283</sup>  
Scavolini <sup>278</sup>  
Tecno <sup>290</sup>  
Tribù <sup>272</sup>  
Zampieri <sup>292</sup>

# / Design chapter — Cc

**/Estel**

Year: 2016  
Table More  
Vicenza/Italy  
Design: Estel+Ingrid Fontanili Architetto  
Laminam 5  
Fokos Terra  
1000x3000  
← →



**/Luca Piccinno**

Year: 2015  
Fashion Cafè  
Milan/Italy  
Designer:  
Luca Piccinno  
I Naturali Gemme,  
Onice Blu Lucidato  
← →



**/Calligaris**

Year: 2015  
 Table Baron Calligaris  
 Milan/Italy  
 Laminam 7  
 Fokos, Terra  
 ← →



**/Calligaris**

Year: 2015  
 Table Airport Calligaris  
 Milan/Italy  
 I Naturali Pietre,  
 Pietra di Savoia Grigia  
 ← →





**/Ozzio Design**

Year: 2015  
 Table Ozzio Design  
 I Naturali Pietre,  
 Pietra di Savoia Perla  
 Laminam 3+  
 ← →

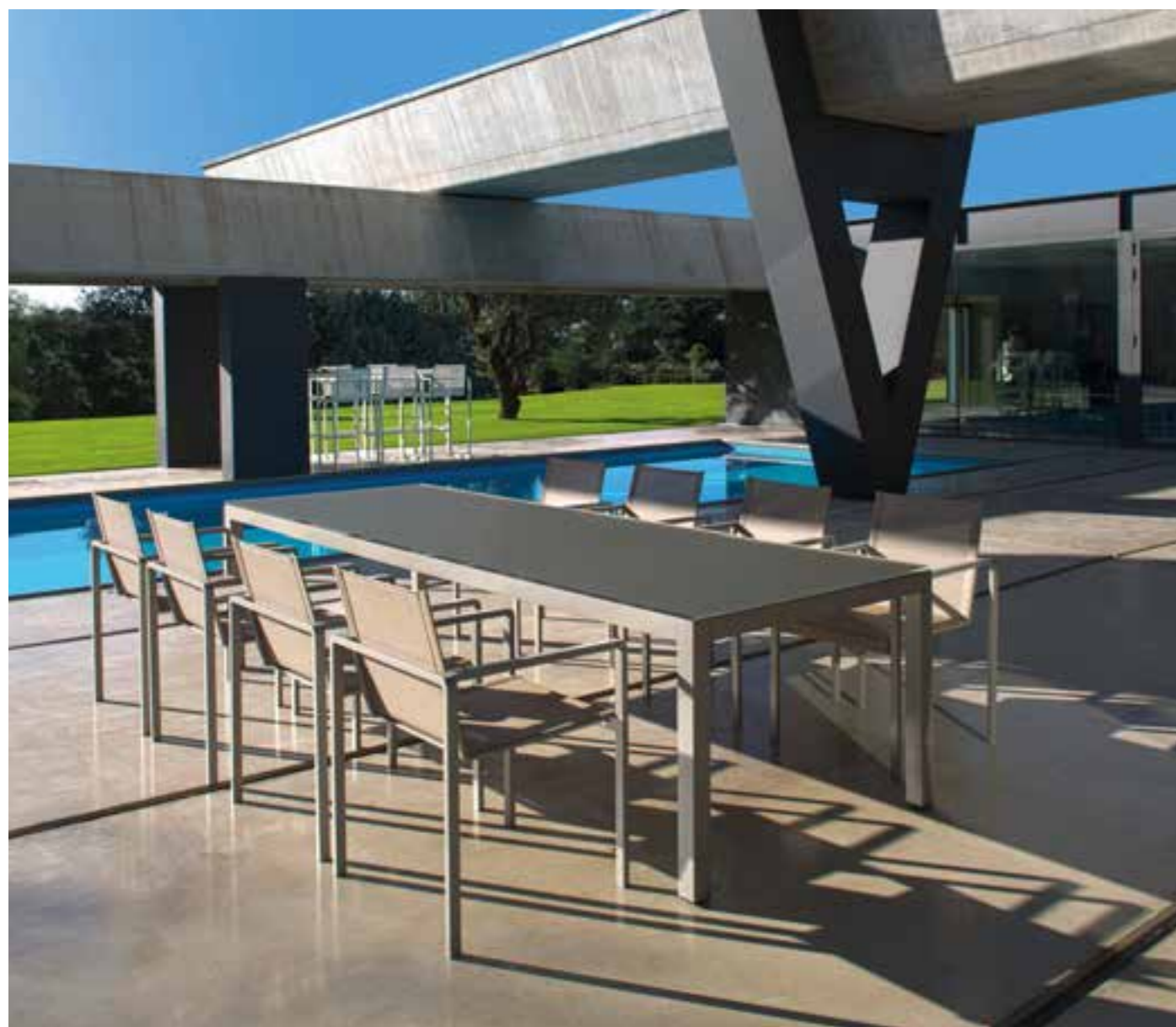


**/Dexo**

Year: 2015  
Table Dexo  
Laminam 7  
Blend, Nero  
Oxide, Perla  
← →

**/Tribù**

Year: 2015  
Table Tribù - Illum  
Table Tribù - Tosca  
Laminam 7  
Fokos, Piombo  
Collection, Bianco  
← →



/Royal Botania

Year: 2015  
 Table Royal Botania  
 Laminam 7  
 Collection, Nero, Bianco  
 ← →





/by **Laminam**

Year: 2015

Desk

Laminam 3+

I Metalli, Plumbeo Ossidato

← →



**/Scavolini**

Year: 2014  
Scavolini Kitchen  
Laminam 7  
Fokos, Roccia  
← →



/Sekisui House Ltd

Year: 2014  
Sliding Doors  
Osaka/Japan  
Laminam 3+  
Oxide, Grigio  
← →



/Sekisui House Ltd

Year: 2014  
 Kitchen  
 Osaka/Japan  
 Laminam 7  
 Oxide Bianco, Moro  
 ← →





**/Alno**

Year: 2013  
 Alno/Kitchen  
 Furniture  
 Laminam 7  
 Oxide, Nero, Grigio  
 ← →



**/Lualdi**

Year: 2013  
Laminam Expo  
Fiorano Modenese/Italy  
Porta Rasomuro Lualdi  
Laminam 3+  
Filo, Rubino  
← →



/by **Laminam**  
Year: 2013  
Laminam Kitchen  
Fiorano Modenese/Italy  
Laminam 5  
Fokos, Roccia, Rena  
← →

**/Tecno**

Year: 2013  
Desktop Tecno  
Designer:  
Luca Scacchetti  
Milan/Italy  
Laminam 3+  
Oxide, Moro Mat  
← →



**/Zampieri**

Year: 2012  
Zampieri Kitchen  
Laminam 7  
Oxide, Grigio  
← →



/Foscarini

Year: 2012  
Solar by Foscarini  
Italy  
Laminam 3  
Oxide, Moro Mat  
←

## Esterni /Exterior

- Goduk Raemian Hill State  
Seoul /South Korea, 2016  
- Kukdong,  
Shinsa-dong /Seoul  
/South Korea, 2016  
- Anyang Buddhism  
Cultural Center  
Anyang, Gyeonggi-do,  
/Seoul, South Korea, 2016  
- Restaurant Yu Yue Lou  
Taichung /Taiwan, 2016  
- Private House  
Seoul /South Korea, 2016  
- Darling Harbour Live -  
International Convention  
Centre  
Sydney /Australia, 2016  
- Novotel/Ibis Hotel -  
Imam Khomeini  
International Airport  
Tehran /Iran, 2016  
- Tech Hard HQ  
Dubai /United Arab Emirates,  
2016  
- Sports Expert  
Montreal /Canada, 2016  
- Moscow Museum of  
Architecture  
Moscow /Russia, 2016  
- Residence Parc du Cap  
Antibes /Nice /France, 2016  
- Residential Bulding /Torino  
/Italy, 2016  
- Sagtubi /Novellara /Reggio  
Emilia /Italy, 2016  
- Hera  
Coriano /Rimini /Italy, 2016  
- Gai S.p.A  
Cuneo /Italy, 2015  
- Ascom  
Treviso /Italy, 2015  
- Villa Augusta  
Bruino /Torino /Italy, 2015  
- Gleneagles Medini  
Medini /Kuala Lumpur  
/Malaysia, 2015  
- Sydney University  
Sydney /Australia, 2015  
- Diwan House  
Kolkata /West Bengal /India,  
2015  
- The Beer Café  
Mumbai, Maharashtra /India,  
2015  
- Private House  
Kaluga region /Ladigino  
/Russia, 2015  
- Sinagogue  
Moscow /Russia, 2015

- Meteor Centre Office Park  
Prague /Czech Republic, 2015  
- Metro Praha – Andel  
Prague /Czech Republic, 2015  
- Politechnika Wroclawska  
Wroclaw University of  
Technology  
Wroclaw /Poland, 2015  
- Aqua Office Building  
Kielce /Poland, 2015  
- Tarnowskie Termy  
Tarnowo Podgórne,  
Pozdan /Poland, 2015  
- Fideuram Bank  
Milan /Italy, 2015  
- UVic University of Vic  
Barcelona /Vic /Spain, 2015  
- Chamber of Deputies  
Santiago de Queretaro  
/Mexico, 2015  
- Commercial Building Plaza  
Mayor  
León Guanajuato /Mexico, 2015  
- Sandton City  
Johannesburg  
/South Africa, 2015  
- Private Residence  
Tauranga /New Zealand  
- Panmure Train Station  
Auckland City /Panmure  
/New Zealand, 2015  
- Lexus  
Auckland City /New Zealand,  
2015  
- Foley Group  
Christchurch /New Zealand,  
2015  
- 365 Bloor St East  
Toronto /Canada, 2015  
- Gree Shopping Center  
Hangzhou /China, 2015  
- Sumito Kanda  
Iwamotocho Bldg  
Tokyo /Japan, 2015  
- United Minicars  
Nagoya /Japan, 2015  
- Hotel Gate  
Kagoshima /Japan, 2015  
- Actus  
Okayama /Japan, 2014  
- Panasonic Center Osaka  
Osaka /Japan, 2014  
- Cassina Ixc.  
Osaka /Japan, 2014  
- Kathleen Kilgour Centre  
Tauranga /New Zealand, 2014  
- 1 York Menkes  
Toronto /Canada, 2014  
- Bay 101  
Busan /South Korea, 2014  
- SR Hotel

Seoul /South Korea, 2014  
- Fluxmans Building  
Johannesburg /South Africa,  
2014  
- Cafè Pouchkine  
Paris /France, 2014  
- La Cornice Contemporanea  
Castelmassa /Rovigo /Italy,  
2014  
- Private House  
Terni /Italy, 2014  
- Offices  
Camerano /Ancona /Italy, 2014  
- Hyundai  
Pordenone /Italy, 2014  
- Decathlon  
Livorno /Italy, 2014  
- Hotel Perla Verde  
Milano Marittima /Italy, 2014  
- Unicoop Tirreno  
Livorno /Italy, 2014  
- MH Tower  
Tokyo /Japan, 2014  
- Silver House  
Gdynia /Danzica /Poland, 2014  
- Portico Office Building  
Warsaw /Poland, 2014  
- Mamontovka School  
Moscow /Russia, 2014  
- UBPA Restaurant  
Nanjing /China, 2014  
- Morguard Development  
11th Avenue Calgary  
Alberta /Canada, 2013  
- Shopping Center  
Pão de Açúcar,  
Rio de Janeiro /Brasil, 2013  
- Natali Trade Building  
La Spezia /Italy, 2013  
- Chateau D'Ax  
Perignano /Pisa /Italy 2013  
- LSI Lamiere Speciali Inox  
Parma /Italy, 2013  
- Shopping Fun  
Nanjing /China, 2013  
- Yangjae Dong Office Building  
Yanjae-dong /South Korea,  
2013  
- Millennium Tower  
Astana /Kazakhstan, 2013  
- Qamardeen Vida Hotel  
Dubai /United Arab Emirates,  
2013  
- Swiss Hotel  
Sochi /Russia, 2013  
- The Ruby Office Building  
Mumbai /India, 2013  
- Gamma Meccanica  
Reggio Emilia /Italy, 2012  
- Office Building  
Bassano del Grappa

/Vicenza /Italy, 2012  
- Residence  
Lido di Camaiore  
/Lucca /Italy, 2012  
- I Tower  
Seoul /South Korea, 2012  
- Songdo BRC  
Seoul /South Korea, 2012  
- Multiplex Cinema  
Macerata /Tolentino /Italy,  
2010  
- Office Building  
Budapest /Hungary, 2010  
- Forum Shopping Center  
Nis /Serb Republic, 2010  
- Residence Kacsza Ganz  
Budapest /Hungary, 2009  
- Pan Pacific  
Seoul /South Korea, 2009  
- Hotel Plaza  
Seoul /South Korea, 2009  
- F&F Commercial Building  
Seoul /South Korea, 2009

## Interni /Interior

- St. Collins Lane  
Melbourne /Australia, 2016  
- Haramain High Speed Rail  
Jeddah /Kingdom of  
Saudi Arabia, 2016  
- Fendi Tower  
Riyadh /Kingdom of  
Saudi Arabia, 2016  
- Sagtubi /Novellara /Reggio  
Emilia /Italy, 2016  
- Takaosanguchi Station  
Tokio /Japan, 2015  
- South Beach Hotel  
/Singapore, 2015  
- Sreda House  
Moscow /Russia, 2015  
- Clarion Hotel  
Prague /Czech Republic, 2015  
- Accessorize stores  
London /UK, 2015  
- Private House  
London /UK, 2015  
- Barbieri Abbigliamento  
Formigine, Modena, 2015  
- Expo Milano, Poland Pavilion  
Milan /Italy, 2015  
- Flexform  
Milan /Italy, 2015—2016  
- Studio Pristner  
Della Fontana & Partners  
Modena /Italy, 2015  
- BridgePoint Hospital  
- Gai S.p.A

Cuneo /Italy, 2015  
Toronto /Canada, 2015  
- Atrium Towers  
Tel Aviv /Israel, 2015  
- InterContinental David Hotel  
Tel Aviv /Israel, 2014  
- Sarona Towers  
Tel Aviv /Israel, 2014  
- Hotel Le Colombare  
Perugia /Foligno /Italy, 2014  
- Hotel Perla Verde  
Ravenna /Milano Marittima  
/Italy, 2014  
- Ariston Thermo S.p.A  
Ancona /Fabriano /Italy, 2014  
- Asahi Kasei Homes  
Tokyo /Japan, 2014  
- Morgan Lovell Office  
London /England, 2013  
- Clinica privata Le Betulle  
Como /Italy, 2013  
- Ristorante Algiubagiò  
Venice /Italy, 2013  
- Power Station of Art  
Shangai /China, 2012  
- Richmond Centre Food Court  
Vancouver /Canada, 2012  
- Hotel Cavour  
Milan /Italy, 2012  
- Chanel Stores  
dal 2010 ad oggi  
- Hotel Cavour  
Milan /Italy, 2012  
- Fendi Stores  
Rome /Italy, 2011  
- Berg Luxury Hotel  
Rome /Italy, 2011  
- Armani Hotel  
Milan /Italy 2011  
- Showroom Ferrari  
2009—2016

## design

- Estel, Table More  
- Calligaris, Table Baron  
- Calligaris, Table Airport  
- Ozzio Design, Tables  
- Dexo Orsenigo, Tables  
- Tribù, Table Illum  
- Tribù, Table Tosca  
- Royal Botania, Tables  
- Scavolini, Kitchens  
- Cucine Lube, Kitchens  
- Alno, Kitchens  
- Zampieri Cucine, Kitchens  
- Bonaldo, Table Octa  
- Moroso, Coffee Table Phoenix  
- Foscarini, Solar Light

## Applicazioni / Applications >

Laminam® è adatta per numerose applicazioni sia in ambienti interni che esterni: Laminam® is suitable for many indoor and outdoor applications:

### Edilizia / Construction Industry:

Pavimenti e rivestimenti, pareti divisorie e attrezzate, controsoffitti, finiture e ripristini di superfici, rivestimenti coibentati, gallerie, metropolitane. Floor and wall coverings, partition and storage walls, false ceilings, surface finishes and restoration, insulated panels, tunnels and undergrounds.

### Sistemi di rivestimento di facciata /

#### Façade cladding systems:

Facciate ventilate, rivestimenti a cappotto o in incollaggio. Ventilated façades, coatings, external claddings.

### Arredamento / Interior design:

Superfici per piani di bagni e cucine, armadi, tavoli, scrivanie, porte ed arredi in genere. Surfaces of kitchen and bathroom tops, cupboards, tables, desks, doors and furnishings in general.

### Settore navale / Shipbuilding sector:

Laminam, grazie alla sua leggerezza e alle elevate caratteristiche tecniche, può agevolmente essere impiegato per la realizzazione di pavimenti e rivestimenti di navi da crociera e imbarcazioni da diporto. The lightness and high technical properties of Laminam make it suitable for floors and walls of cruise ships and sports crafts.

### Pannelli compositi e strutturali / Composite and structural panels:

Le lastre possono essere sovrapposte fra di loro o ad altri materiali per realizzare pannelli strutturali e compositi particolarmente resistenti ed estremamente leggeri, indicati in tutte quelle situazioni nelle quali sono necessarie un'elevata tenuta e una riduzione del carico di peso sulle superfici.

The slabs can be placed on top of each other or over other materials to create extremely light and particularly resistant composite and structural panels suitable in all those cases that require high resistance and reduced weight load on the surface.

## Info tecniche / Technical infos >

### Laminam 3

Laminam 3 è la lastra generatrice di base. Dimensioni nominali: 1000mmx3000mm Spessore nominale: 3mm Rapporto minimo area utile / spessore: 8x10<sup>5</sup>

#### Utilizzo di Laminam 3

- Settore edile: rivestimento di pareti, soffitti, interni ed esterni tramite incollaggio.
- Settore arredo e interior design

Laminam 3 is the basic slab and starting point for other versions. Nominal dimensions: 1000mmx3000mm Nominal thickness: 3mm Minimum useful area/thickness ratio: 8x10<sup>5</sup>

#### Use of Laminam 3

- Construction industry: internal and external applications, for wall and ceiling covering, with adhesive.
- Furniture industry and interior design application.

### Laminam 3+

Laminam 3+ è costituita dalla lastra di base rinforzata strutturalmente con una stuoia in fibra di vetro applicata sul retro con apposito collante. Spessore nominale: 3mm

#### Utilizzo di Laminam 3+

- Settore edile: Pavimenti e rivestimenti, su massetti o pavimenti preesistenti tramite incollaggio, in ambienti residenziali non interessati da traffico intenso.
- Pareti ventilate
- Pareti continue
- Settore arredo e interior design.

Laminam 3+ is the basic slab structurally reinforced with a fibreglass mat attached to the back with a special adhesive. Nominal thickness: 3mm

#### Use of Laminam 3+

- Construction industry: residential flooring and wall covering application either on screed or existing walls and floors not affected by heavy traffic, through direct adhesion.
- Ventilated façades.
- Curtain walls.
- Furniture industry and Interior design application.

### Laminam 5

Laminam 5 è lastra generatrice di base. Spessore nominale: 5,6 mm

#### Utilizzo di Laminam 5

- Settore edile: rivestimento di pavimenti, su massetti o pavimenti preesistenti tramite incollaggio, in ambienti commerciali interessati da traffico intenso.
- Pareti ventilate (solo previa applicazione di fibra di vetro sul retro delle lastre)
- Pareti continue (solo previa applicazione di fibra di vetro sul retro delle lastre).
- Settore arredo e interior design.

Laminam 5 is a basic slab, Nominal thickness: 5.6 mm

#### Use of Laminam 5

- Construction industry: residential and heavy commercial flooring application either on screed or existing floors through direct adhesion.
- Ventilated façades (prior application of fibreglass mesh to the back of the slabs).
- Curtain walls (prior application of fibreglass mesh to the back of the slabs).
- Furniture industry and interior design application.

### Laminam 7

Laminam 7 è un sandwich di due Laminam 3 con interposta la stuoia in fibra di vetro, aventi le superfici frontali rivolte nello stesso verso. Pertanto il lato retro della lastra inferiore coincide con il lato retro di Laminam 7. Spessore nominale: 7mm

#### Utilizzo di Laminam 7

- Settore arredo e interior design

Laminam 7 is a sandwich made of two Laminam 3 slabs with a fibreglass mat placed between them. The front surfaces are turned in the same direction. Hence, the backside of the lower slab is also the backside of Laminam 7. Nominal thickness: 7mm

#### Use of Laminam 7

- Furniture industry and interior design application.

### Laminam 3+3

Laminam 3+3 è un sandwich di due Laminam 3 con interposta la stuoia in fibra di vetro, aventi le superfici frontali rivolte nel verso opposto tra loro. Pertanto entrambe le superfici di Laminam 3+3 risultano frontali. Spessore nominale: 7mm

#### Utilizzo di Laminam 3+3

- Settore arredo e interior design

Laminam 3+3 is a sandwich made of two Laminam 3 slabs with a fibreglass mat placed between them. The front surfaces are turned in the opposite direction. Hence, both surfaces of Laminam 3+3 are fronts. Nominal thickness: 7mm.

#### Use of Laminam 3+3

- Furniture industry and interior design application.

### Laminam 5+3

Laminam 5+3 è un sandwich di due Laminam 5 e Laminam 3 con interposta la stuoia in fibra di vetro, aventi le superfici frontali rivolte nello stesso verso. Pertanto il lato retro della lastra inferiore coincide con il lato retro di Laminam 5+3. Spessore nominale: 8mm

#### Utilizzo di Laminam 5+3

- Settore arredo e interior design

Laminam 5+3 is a sandwich made of Laminam 5 and Laminam 3 slabs with a fibreglass mat placed between the two slabs. The front surfaces of the slabs are turned to the same direction. Hence, the backside of the lower slab is also the backside of Laminam 5+3. Nominal thickness: 8mm

#### Use of Laminam 5+3

- Furniture industry e interior design application.



## Voci di Capitolato / Technical Specifications >

### Laminam 3

Porcellana laminata ottenuta per macinazione ad umido di materie prime argillose, rocce granitiche e metamorfiche, a componente feldspatica e pigmenti ceramici. Compattata da speciale formatura in compatter e sinterizzazione a 1200° C, con cottura ibrida. A bordo squadrato monocalibro.

Laminated porcelain obtained by wet grinding of clayish raw materials, granite and metamorphic, feldspar-containing rocks and ceramic pigments. Compacted by a special shaping in compatter and sintering at 1200°C, with hybrid firing. With single gauge square edge.

### Laminam 3+

Porcellana laminata ottenuta per macinazione ad umido di materie prime argillose, rocce granitiche e metamorfiche, a componente feldspatica e pigmenti ceramici. Compattata da speciale formatura in compatter e sinterizzazione a 1200° C, con cottura ibrida. A bordo squadrato monocalibro e con rinforzo strutturale di materiale inerte (stuoia in fibra di vetro applicata sul retro).

Laminated porcelain obtained by wet grinding of clayish raw materials, granite and metamorphic, feldspar-containing rocks and ceramic pigments. Compacted by a special shaping in compatter and sintering at 1200°C, with hybrid firing. With single gauge square edge and with a structural reinforcement in inert material (fiberglass blanket bonded at the back).

### Laminam 5

Porcellana laminata ottenuta per macinazione ad umido di materie prime argillose, rocce granitiche e metamorfiche, a componente feldspatica e pigmenti ceramici. Compattata da speciale formatura in compatter e sinterizzazione a 1200° C, con cottura ibrida. A bordo squadrato monocalibro.

Laminated porcelain obtained by wet grinding of clayish raw materials, granite and metamorphic, feldspar-containing rocks and ceramic pigments. Compacted by a special shaping in compatter and sintering at 1200°C, with hybrid firing. With single gauge square edge.

### Laminam 7

Porcellana laminata ottenuta per macinazione ad umido di materie prime argillose, rocce granitiche e metamorfiche, a componente feldspatica e pigmenti ceramici. Compattata da speciale formatura in compatter e sinterizzazione a 1200° C, con cottura ibrida. A bordo squadrato monocalibro, a doppia lastra accoppiata con rinforzo strutturale di materiale inerte (stuoia in fibra di vetro interposta tra le due lastre).

Laminated porcelain obtained by wet grinding of clayish raw materials, granite and metamorphic, feldspar-containing rocks and ceramic pigments. Compacted by a special shaping in compatter and sintering at 1200°C, with hybrid firing. With single gauge square edge, with double slab coupled with a structural reinforcement in inert material (fiberglass blanket placed between the two slabs).

### Laminam 3+3

Porcellana laminata ottenuta per macinazione ad umido di materie prime argillose, rocce granitiche e metamorfiche, a componente feldspatica e pigmenti ceramici. Compattata da speciale formatura in compatter e sinterizzazione a 1200°, con cottura ibrida. A bordo squadrato monocalibro, a doppia lastra accoppiata con rinforzo strutturale di materiale inerte (stuoia in fibra di vetro interposta tra le due lastre). Laminam 3+3 è un sandwich di due Laminam 3 con interposta la stuoia in fibra di vetro, aventi le superfici frontali rivolte nel verso opposto tra loro. Pertanto entrambe le superfici di Laminam 3+3 risultano frontali.

Laminated porcelain obtained by wet grinding of clayish raw materials, granite and metamorphic, feldspar-containing rocks and ceramic pigments. Compacted by a special shaping in compatter and sintering at 1200°C, with hybrid firing. With single gauge square edge, with double slab coupled with a structural reinforcement in inert material (fiberglass blanket placed between the two slabs ). Laminam 3+3 is a sandwich made of two Laminam 3 slabs with a fibreglass mat placed between them. The front surfaces are turned in the opposite direction.

### Laminam 5+3

Porcellana laminata ottenuta per macinazione ad umido di materie prime argillose, rocce granitiche e metamorfiche, a componente feldspatica e pigmenti ceramici. Compattata da speciale formatura in compatter e sinterizzazione a 1200° C , con cottura ibrida. A bordo squadrato monocalibro, a doppia lastra accoppiata con rinforzo strutturale di materiale inerte (stuoia in fibra di vetro interposta tra le due lastre). Laminam 5+3 è un sandwich di due Laminam 5 e Laminam 3 con interposta la stuoia in fibra di vetro, aventi le superfici frontali rivolte nello stesso verso. Pertanto il lato retro della lastra inferiore coincidecon il lato retro di Laminam 5+3.

Laminated porcelain obtained by wet grinding of clayish raw materials, granite and metamorphic, feldspar-containing rocks and ceramic pigments. Compacted by a special shaping in compatter and sintering at 1200°C, with hybrid firing. With single gauge square edge, with double slab coupled with a structural reinforcement in inert material (fiberglass blanket placed between the two slabs). Laminam 5+3 is a sandwich made of Laminam 5 and Laminam 3 slabs with a fibreglass mat placed between the two slabs. The front surfaces of the slabs are turned to the same direction. Hence, the backside of the lower slab is also the backside of Laminam 5+3.

## Valori distintivi / Distinctive values >

### Caratteristiche principali / Main features:

Dimensioni/Dimensions 1000x3000mm  
 Perfetta Planarità / Perfectly Flat  
 Leggerezza / Lightness 7 kg/mq

### Resistenza agli attacchi chimici / Chemical resistant:

Laminam resiste ai solventi organici, inorganici, disinfettanti e detergenti. Si pulisce con estrema facilità mantenendo inalterate le caratteristiche della superficie; l'unico prodotto in grado di attaccare il prodotto è l'acido fluoridrico. Laminam resists to organic and inorganic solvents, disinfectants and detergents. It can be easily cleaned without affecting its surface characteristics; the only product that can attack the slabs is hydrofluoric acid.

### Resistenza all'usura / Wear resistant:

Laminam resiste ai graffi e all'abrasione profonda. Le sue proprietà rimangono pertanto inalterate anche dopo un uso intensivo e una pulizia frequente. Laminam is highly scratchproof and resistant to deep abrasion. The properties of the slabs remain unchanged even after intensive use and frequent cleaning.

### Elevata resistenza alla flessione / High flexural strength:

Laminam presenta un elevato modulo di rottura. Laminam has a high modulus of rupture.

### Ingelività / Frost resistant:

Grazie ad un assorbimento medio di acqua pari allo 0,1% Laminam resiste al gelo e si adatta a tutte le condizioni climatiche. Laminam's average water absorption is 0.1% therefore it is frost resistant and suitable for any weather condition.

### Resistenza al fuoco / Fire resistant:

Laminam non contiene materie organiche, pertanto, resiste al fuoco e alle alte temperature. In caso d'incendio non sprigiona fumo e non emette sostanze tossiche. Laminam does not contain organic material therefore it is resistant to fire and high temperatures. In the event of fire it does not release smoke or toxic substances.

### Superficie igienica / Hygienic surface:

Laminam è totalmente compatibile con le sostanze alimentari in quanto non rilascia elementi in soluzione. Non consente l'insorgenza di muffe, batteri e funghi. Laminam is perfectly suitable for food substances since it does not release elements in solution. It does not allow the formation of mould, bacteria and fungi.

### Proprietà cromatiche / Chromatic properties:

Priva di pigmenti organici, Laminam resiste ai raggi UV. I colori non subiscono alcuna alterazione, anche se sottoposti a variazioni delle condizioni climatiche. Laminam does not contain organic pigments and is resistant to UV rays. Even if subjected to severe climate changes, the colours remain stable.

### Eco-compatibilità e riciclabilità / Eco-friendly and recyclable:

Laminam è un prodotto totalmente naturale. Non cede elementi all'ambiente e può essere facilmente macinato e interamente riciclato in altri processi produttivi. Laminam is a totally natural product. It does not release any elements into the environment and can be easily milled and recycled in other manufacturing processes.

### Antigraffiti / Graffiti proof:

Laminam è la prima superficie ceramica antigraffiti, si pulisce facilmente e non viene intaccata nemmeno dalle vernici più tenaci. Laminam is the first graffiti proof ceramic surface; it is easy to clean and even the strongest paints can be easily removed.

**/contacts**

Laminam S.p.A  
via Ghiarola Nuova 258  
41042 Fiorano Modenese  
(Modena) / Italy  
Tel +39 0536 1844200  
Fax +39 0536 1844201  
www.laminam.it

Laminam Showroom  
Via Mercato, 3  
20121, Milano / Italy  
Tel +39 02 89092496  
Fax +39 02 89092497

**/credits**

art direction+design:  
/graphX Milano

photo:  
Andrea Garuti  
p. 6-11, 18-21, 26-29, 32-85, 92-97,  
100-101, 110-115, 130-131, 152-155,  
162-169, 174-175, 178-187, 190-193, 212-  
213, 218-221, 250-251, 262-263  
Andrea Martiradonna  
p. 88-91, 108-109, 116-123,  
126-127, 128-129, 132-141, 146-151,  
156-157, 158-161, 194-199, 216-217, 222-  
225, 230-231, 232-245, 249-249,  
254-255, 276-277, 286-291  
Daniele Domenicali  
p. 144-145, 252-253  
Elodie Cavallaro  
p.12-17, 22-25, 30-31, 86-87, 98-99,  
102-103, 106-107, 172-173, 188-189, 200-  
207, 226-227, 260-261  
Various  
p.176-177, 208-211, 214-215, 228-229,  
246-247, 256-257, 264-275, 278-284,  
292-295

printed in italy:  
/Grafiche Pioppi

©settembre 2016



Cod. LAMC000837  
Campionatura gratuita di  
modico valore ai sensi del  
DPR 633/72 e succ. modifiche art.2  
Copyright 2016 Laminam S.p.A.

